



Argo Knotless®

SUTURE ANCHOR FAMILY

Introducing the next evolution in advanced suture anchor technology – from shoulder to foot and ankle procedures, Argo Knotless® sets a new standard for orthopedic excellence.



To learn more, call
1-866-4CONMED (Toll Free)
727-214-3000 (International)
or visit www.CONMED.com.

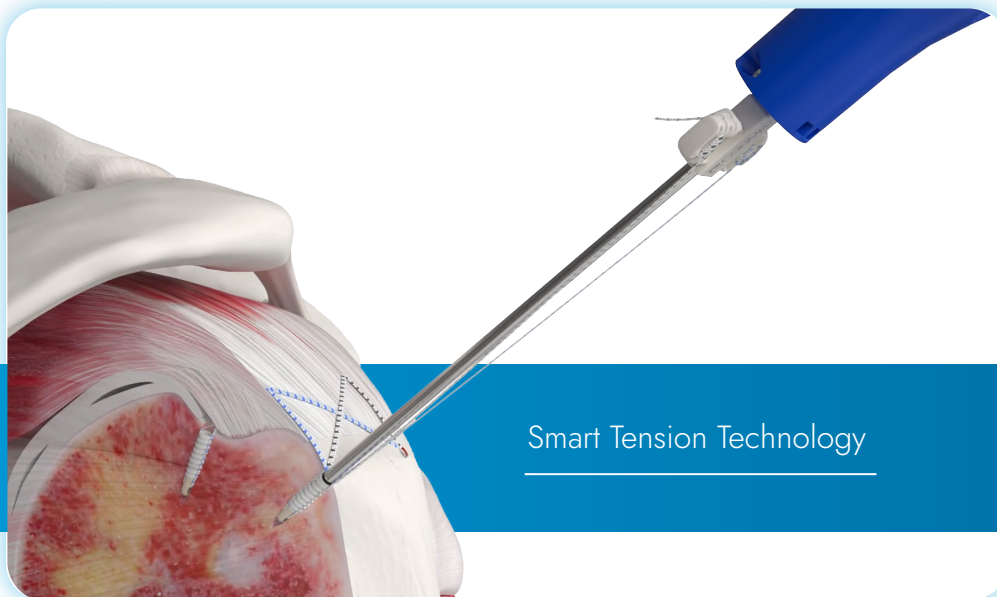


The Argo Knotless® Family

Ultimate Tension Control

Eliminate uncertainty and introduce exceptional control with CONMED's Argo Knotless® anchor family.

Smart Tension Technology empowers users to adjust tension precisely, maintaining consistent suture tension from insertion to deployment. With an extended suture eyelet, Argo Knotless® anchors facilitate seamless suture loading and tensioning.

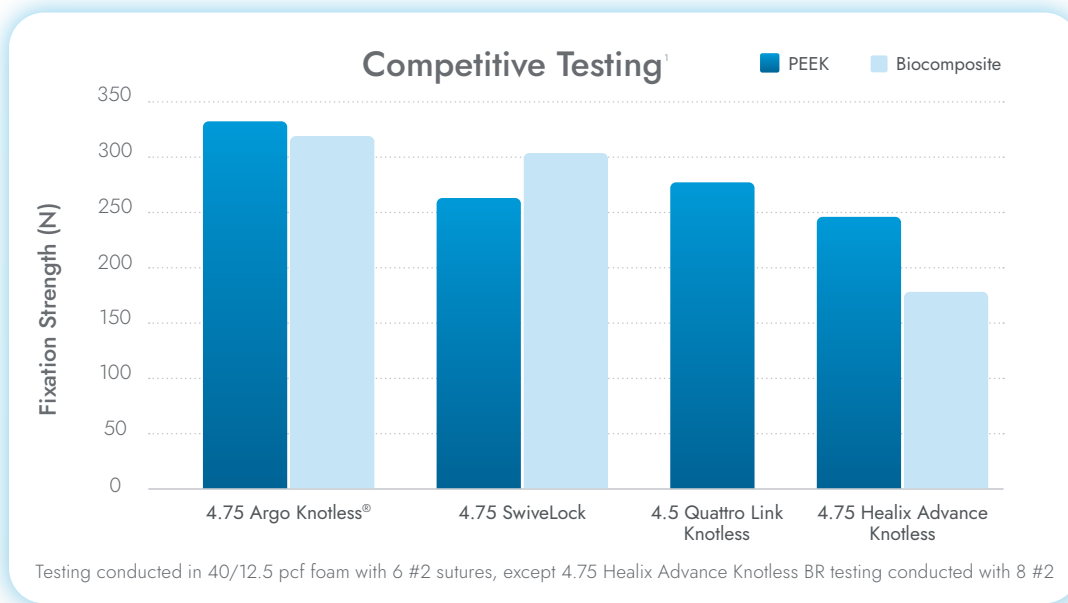


Effortless Efficiency

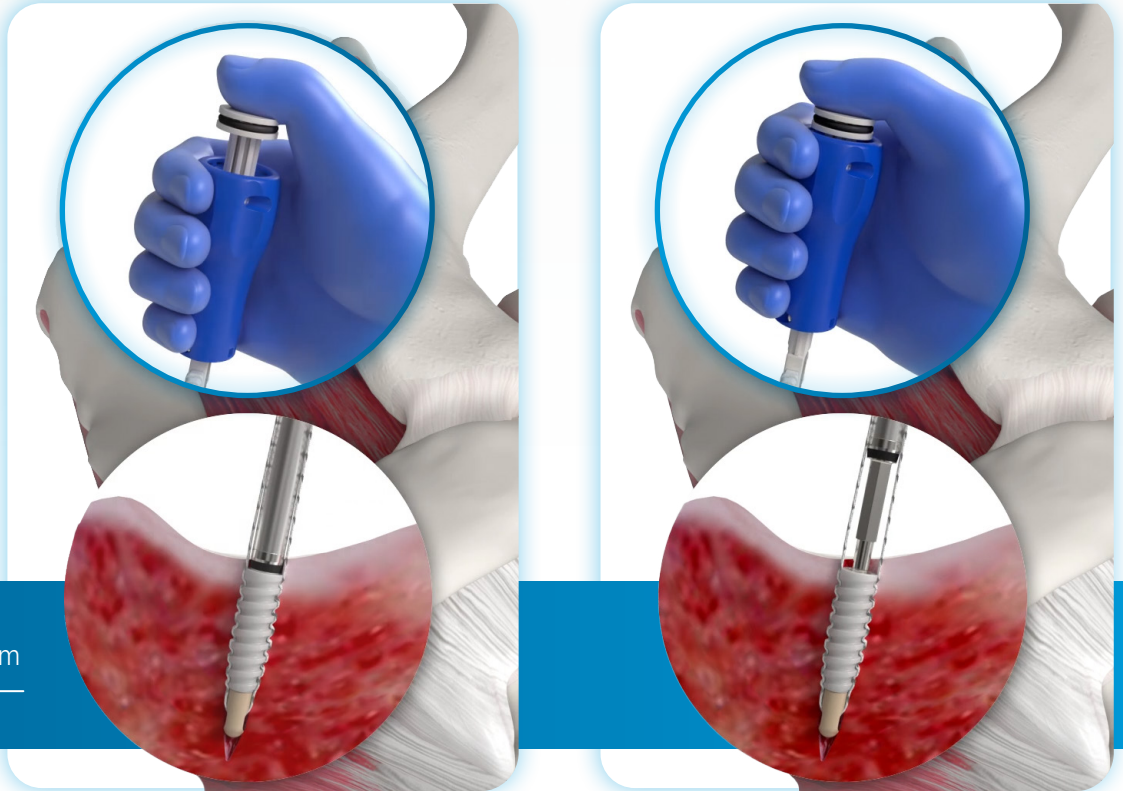
Experience optimized efficiency and reliability in every procedure, thanks to the cutting-edge design of Argo Knotless®. The state-of-the-art buttress thread design ensures robust fixation, minimizing the risk of anchor pullout for enhanced patient outcomes.



State-of-the-art buttress thread



Quick Release Mechanism



Our anchors are meticulously crafted to streamline the repair process. After anchor insertion, the Quick Release mechanism mechanically retracts the driver from the anchor body, simplifying disengagement and eliminating the need for backmalleting.

Available pre-loaded with swaged tape, Argo Knotless® shortens the repair process by reducing suture passing steps. A variety of suture color configurations provides suture differentiation, making suture management a breeze.

Want to eliminate even more steps in your procedure? Take advantage of the self-punching option and skip the step of pilot hole preparation.

With Argo Knotless®, even complex reconstructions feel effortless.

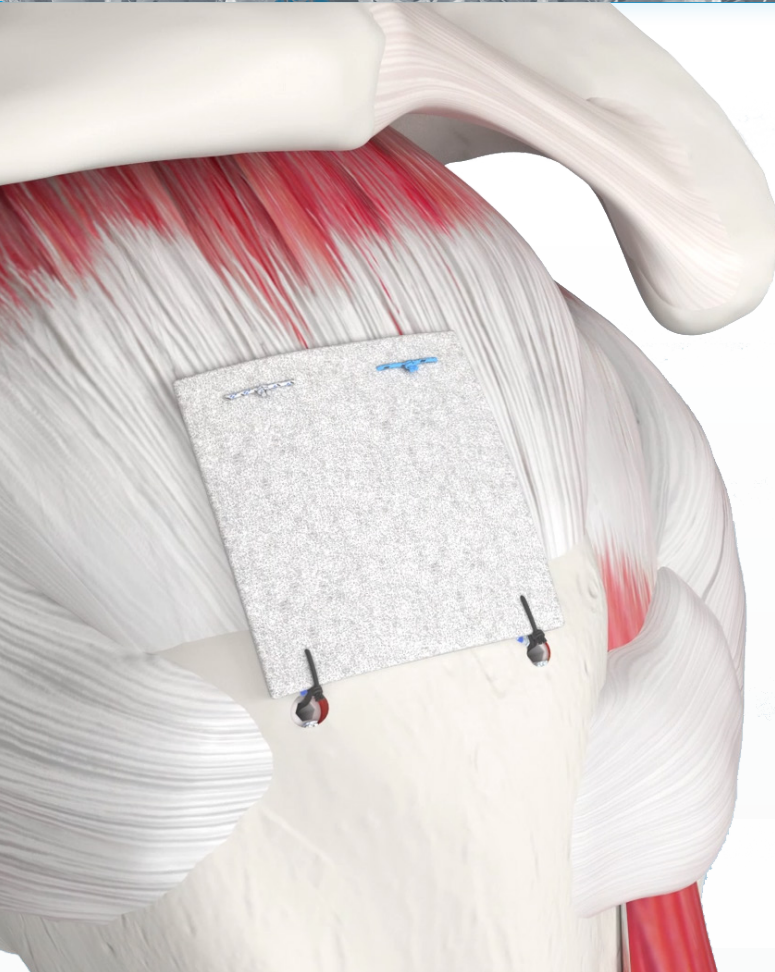
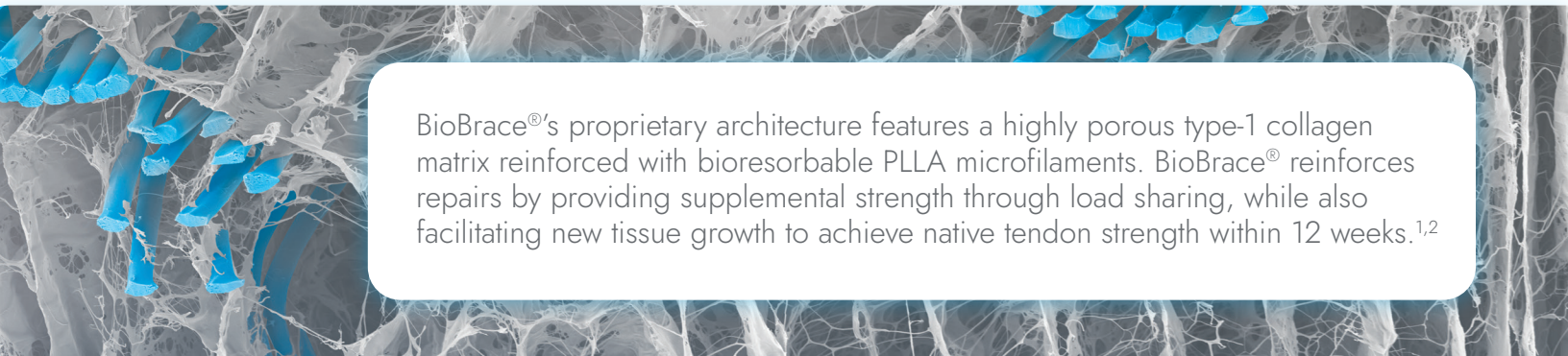


Optimized Outcomes

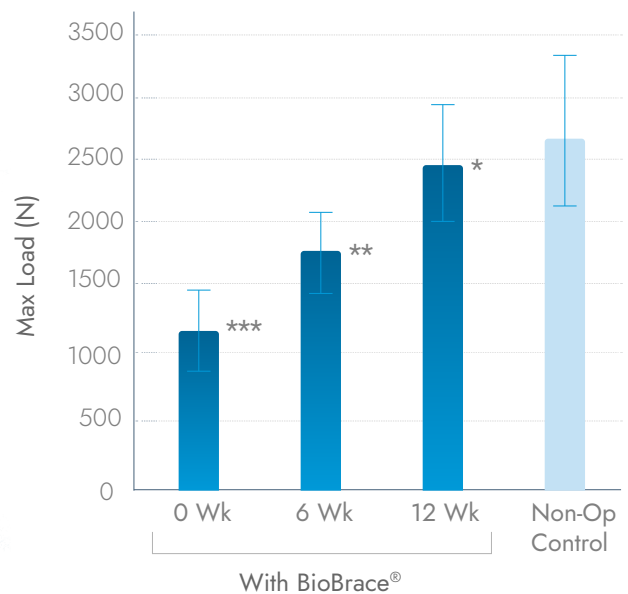
Step into the future of orthopedic surgery by combining Argo Knotless® GENESYS™ with CONMED's BioBrace® technology for unparalleled strength and healing, setting a new standard in orthopedic care.



BioBrace®'s proprietary architecture features a highly porous type-1 collagen matrix reinforced with bioresorbable PLLA microfilaments. BioBrace® reinforces repairs by providing supplemental strength through load sharing, while also facilitating new tissue growth to achieve native tendon strength within 12 weeks.^{1,2}



Through augmentation, achieve native tendon strength within 12 weeks^{1,2}



*No significant difference between 12wk and non-operated control (p=0.35)

** Statistically significant increase between 6 and 12wk (p=0.01)

*** Statistically significant increase between 0 and 6 wk (p=0.01)

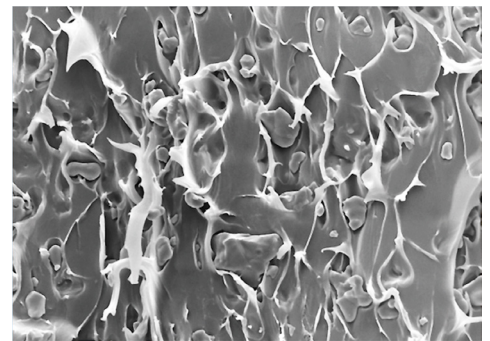
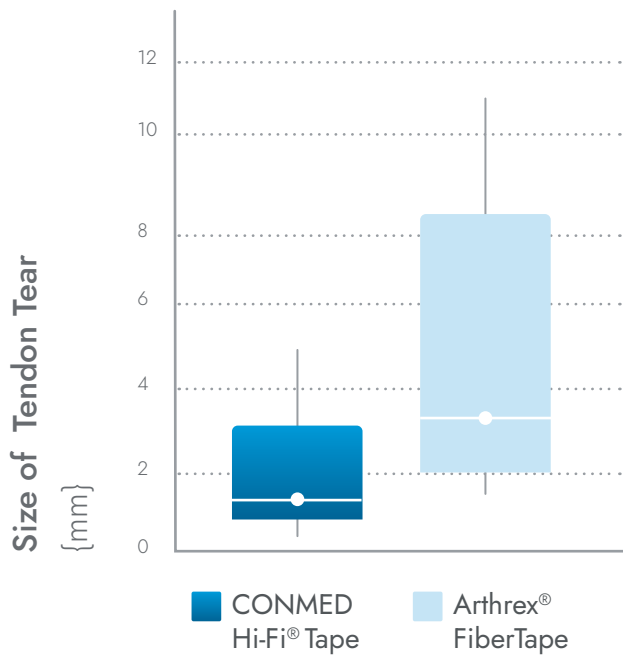
¹ K203267 – 510(k) Clearance Letter - The BioBrace® Implant

² Based on preclinical animal data

Provide exceptional results with Argo Knotless®. CONMED's Hi-Fi® Tape is 69% less abrasive than the leading competitor when measuring tendon tear-through, and offers broader compression than #2 suture for increased tendon-to-bone interface.¹

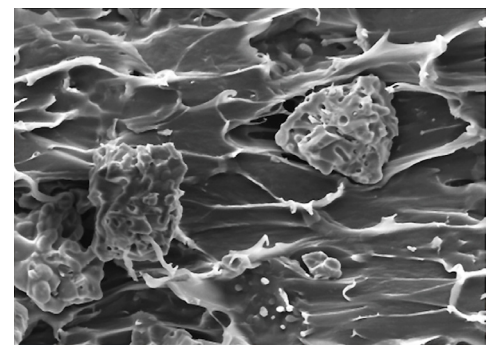


Tendon Tear-Through by Suture Tape



GENESYS™ (microTCP™ material)

Magnification 500X



STANDARD (β-TCP material)

Magnification 500X

Backed by extensive research, CONMED's GENESYS™ biocomposite material provides an optimal combination of biologic healing and mechanical integrity. The GENESYS™ material incorporates β-TCP in its smallest form, known as microTCP™, which is created through a proprietary filtration process. The result is a uniformly embedded blend that boosts material strength by up to 51%.² The GENESYS™ material provides optimized absorption rates, and may promote bone in-growth to allow for seamless integration with the body.³

¹TR16-787. Compared with FiberTape.

²Internal Report: TR10-496

³Properties of GENESYS™ Biocomposite Material Compared to Pure Polylactide (PLA). ConMed Linvatec Research and Development. 2012.



The Argo Knotless® Family

Ordering Information

Description	Catalog Number	
Argo PEEK		
4.75mm Argo Knotless® Anchor with 1mm Hi-Fi® Ribbon	K475	
5.5mm Argo Knotless® Anchor with 1mm Hi-Fi® Ribbon	K55	
4.75mm Argo Knotless® Self-Punching Anchor with 1mm Hi-Fi® Ribbon	SPK475	
5.5mm Argo Knotless® Self-Punching Anchor with 1mm Hi-Fi® Ribbon	SPK55	
Instruments	Reusable	Disposable
4.75/5.5mm Argo Knotless® Smooth Punch	K4755RSP	K4755DSP
4.75/5.5mm Argo Knotless® Tapered Broaching Punch	K4755RTBP	K4755DTBP
4.75mm Argo Knotless® Tap	K475RTAP	K475DTAP
5.5mm Argo Knotless® Tap	K55RTAP	K55DTAP
4.75/5.5mm Argo Knotless® Disposable Drill Bit	—	K4755D
Argo GENESYS™		
4.75mm Argo Knotless® GENESYS™ Anchor with #2 Hi-Fi® Suture	KBC475	
5.5mm Argo Knotless® GENESYS™ Anchor with #2 Hi-Fi® Suture	KBC55	
4.75mm Argo Knotless® GENESYS™ Anchor, Hi-Fi Tape, Blue/Blue	KBC475TB	
4.75mm Argo Knotless® GENESYS™ Anchor, Hi-Fi Tape, White/Black	KBC475TW	
5.5mm Argo Knotless® GENESYS™ Anchor, Hi-Fi Tape, Blue/Blue	KBC55TB	
5.5mm Argo Knotless® GENESYS™ Anchor, Hi-Fi Tape, White/Black	KBC55TW	
4.75mm Argo Knotless® GENESYS™ SP Anchor	SPKBC475	
5.5mm Argo Knotless® GENESYS™ SP Anchor	SPKBC55	
Instruments	Reusable	Disposable
4.75 Argo Knotless® GENESYS™ Smooth Punch	KBC475RSP	KBC475DSP
4.75/5.5mm Argo Knotless® GENESYS™ Broaching Punch	KBC4755RBP	KBC4755DBP
4.75mm Argo Knotless® GENESYS™ Tap	KBC475RTAP	KBC475DTAP
5.5mm Argo Knotless® GENESYS™ Tap	KBC55RTAP	KBC55DTAP
4.75/5.5mm Argo Knotless® GENESYS™ Disposable Drill Bit	—	K4755D
BioBrace®		
BioBrace® 23mm x 30mm	BB23X30	
BioBrace® 5mm x 250mm	BB5X250	

CONMED Corporation
11311 Concept Blvd.
Largo, FL 33773

Toll Free: 1-866-4CONMED
International: 727-214-3000
www.CONMED.com

customerexperience@conmed.com
internationalorders@conmed.com